

## LOW VISION ASSESSMENT

Apart from prescribing Low Vision aids, the Optometrists in the Vision Clinic use high contrast charts and specialized rehabilitation techniques. This process optimizes the ability to maximize visual acuities with corrective lenses. The Optometrists also prescribe dedicated glasses for specific tasks such as computer work or reading sheet music. Prism assessments are provided in an attempt to alleviate double vision. Prism can also be helpful with visual field expansion for peripheral vision loss. Eccentric fixation technique is taught to address central vision loss issues.



## PAYMENT FOR SERVICES

The Vision Clinic accepts most forms of insurance. Low Vision Exams are billed through MEDICAL insurance and we take most private insurances as well as all Medicare and Medicaid plans. Routine Exams are billed through VISION insurance. We take private insurance including most Davis Vision and EyeMed plans, as well as all Medicaid plans. Please note, Medicare does not cover a routine exam and does not cover glasses. The Vision Clinic also fills outside prescriptions.

**If you have been told your vision cannot be improved with stronger eyeglasses...**

**And medicine or surgery will not improve your vision further...**

**Contact the Vision Clinic at Cleveland Sight Center. For an appointment or to learn more about the services provided, call 216-791-8118.**

The staff at the Vision Clinic performs **low vision evaluations** and **routine eye exams**. Optometrists who specialize in low vision work directly with patients to determine which low vision aids, adaptations and techniques will maximize your remaining vision. Occupational Therapists on staff teach patients how to incorporate these aids and techniques into your daily routines to improve your quality of life.



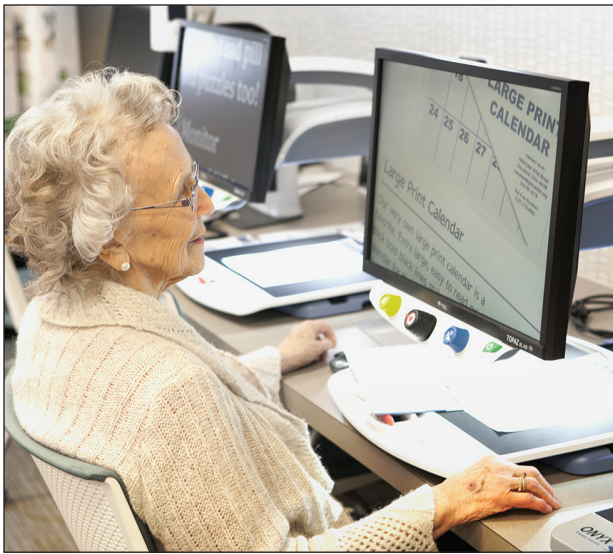
University Circle  
1909 East 101<sup>st</sup> Street  
Cleveland, OH 44106  
216-791-8118  
[clevelandsightcenter.org](http://clevelandsightcenter.org)



# VISION CLINIC

**Practical Solutions to Maximize Remaining Vision**





## LOW VISION AIDS

Low vision aids for **reading or close work** may include: video magnifiers, handheld magnifiers, stand magnifiers or those that clip on or are mounted to regular spectacles. Objects seen at a **distance** are seen more clearly through telescopic lenses. These are hand-held, clipped onto standard eyeglasses or permanently ground into spectacle lenses.

Additional types of low vision aids include:

- Closed circuit televisions (CCTV)
- Special lighting techniques and devices
- Glare control lenses
- Other magnification devices of varying strengths.

## ADDITIONAL SERVICES

### OCCUPATIONAL THERAPY

The Vision Clinic has an Occupational Therapist on staff to provide assessments and additional training for how to use low vision aids. The recommendations from the Optometrist's referral are used as a guideline in providing this service. New techniques are explored to use in everyday activities with an emphasis on reading and viewing.

### SOCIAL WORK

Having a social worker available to patients in the Vision Clinic makes it easy to access services, which include Independent Living (IL), Transitional Life Counseling (TLC), Recreation Activities (RA) as well as Support Groups throughout the community. At the end of their visit, patients leave educated and empowered with the knowledge of what Cleveland Sight Center can offer them.

### ORIENTATION & MOBILITY

Orientation & Mobility training is provided at Cleveland Sight Center and is designed to increase personal safety, preserve independence and reduce fear caused by the loss of vision.

Cleveland Sight Center's (CSC) mission is to empower people with vision loss to realize their full potential and to shape the community's vision of that potential. CSC's services are accredited at the highest level of standards from CARF, a national, independent, nonprofit accrediting body.

## EMPOWERMENT FUND AND SCHOLARSHIPS

CSC's Empowerment Fund was created to assist those who need financial assistance with the purchase of assistive technology and other Low Vision products. To learn more about CSC's Empowerment Fund and whether you may qualify, contact the Vision Clinic at 216-791-8118.

## EYEDEA SHOP

Magnifiers, a variety of lamps and reading boards, large print products such as calendars and check registers, talking clocks, specialized pens and hundreds of other tools useful for daily living are available through CSC's Eyedea Shop. Check out the latest in aids at [eyedeashop.com](http://eyedeashop.com) or in person at:

Cleveland Sight Center  
1909 East 101<sup>st</sup> Street  
Cleveland, OH 44106  
216-791-8118

